

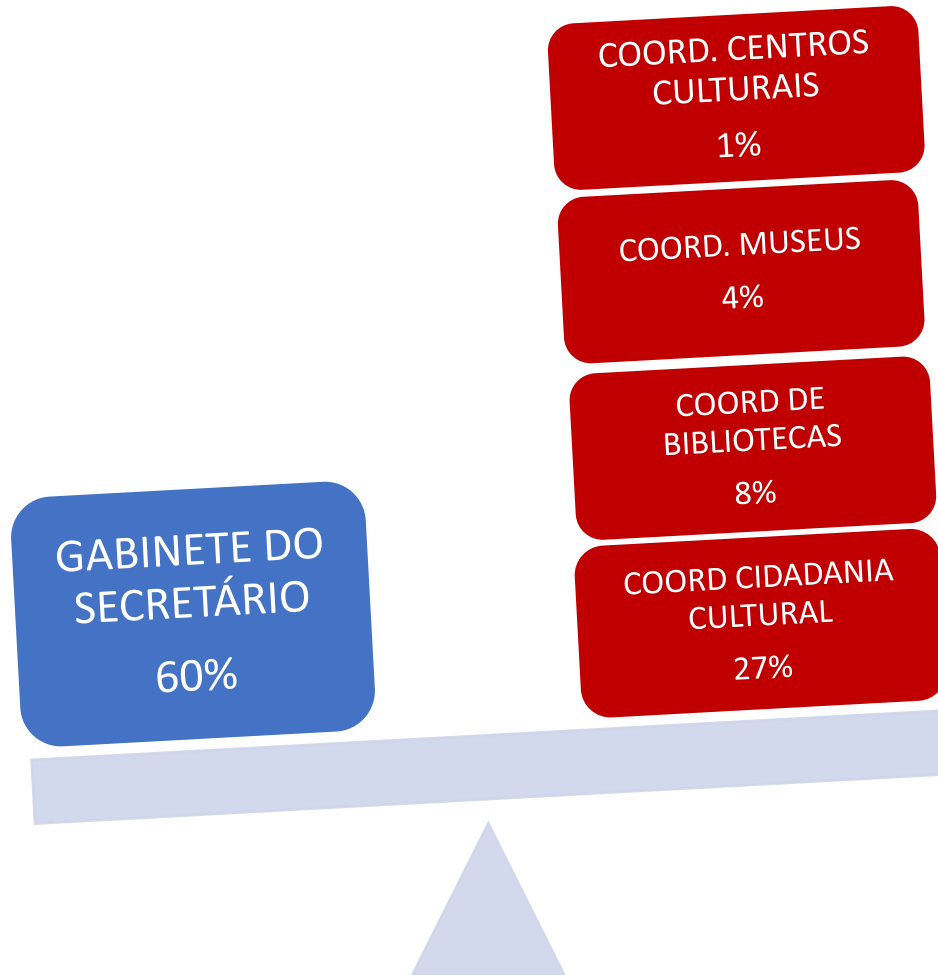
# TERRITORIALIZAÇÃO DA POLÍTICA CULTURAL

ALUÍZIO MARINO

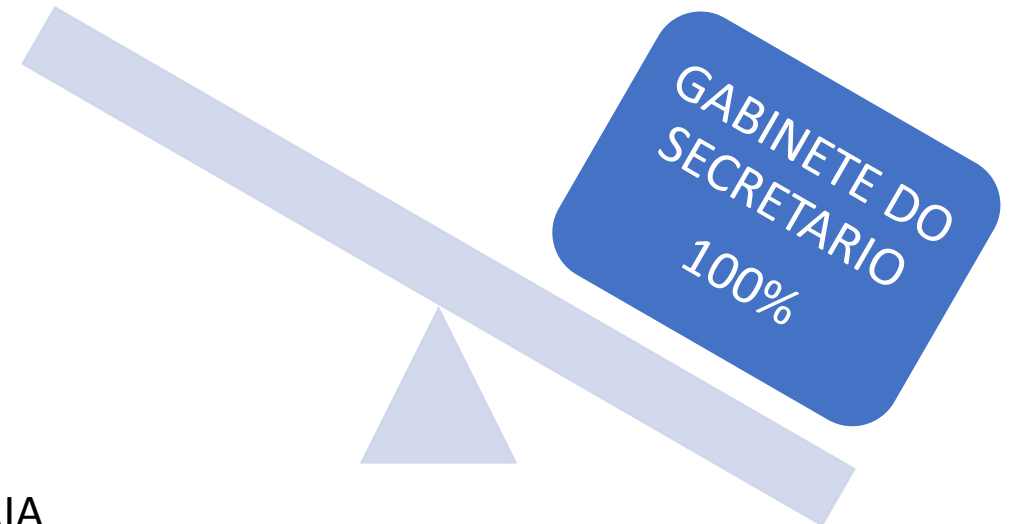
[aluizio.marino@ufabc.edu.br](mailto:aluizio.marino@ufabc.edu.br)

# ESTRUTURA ORÇAMENTÁRIA DA SMC

2017

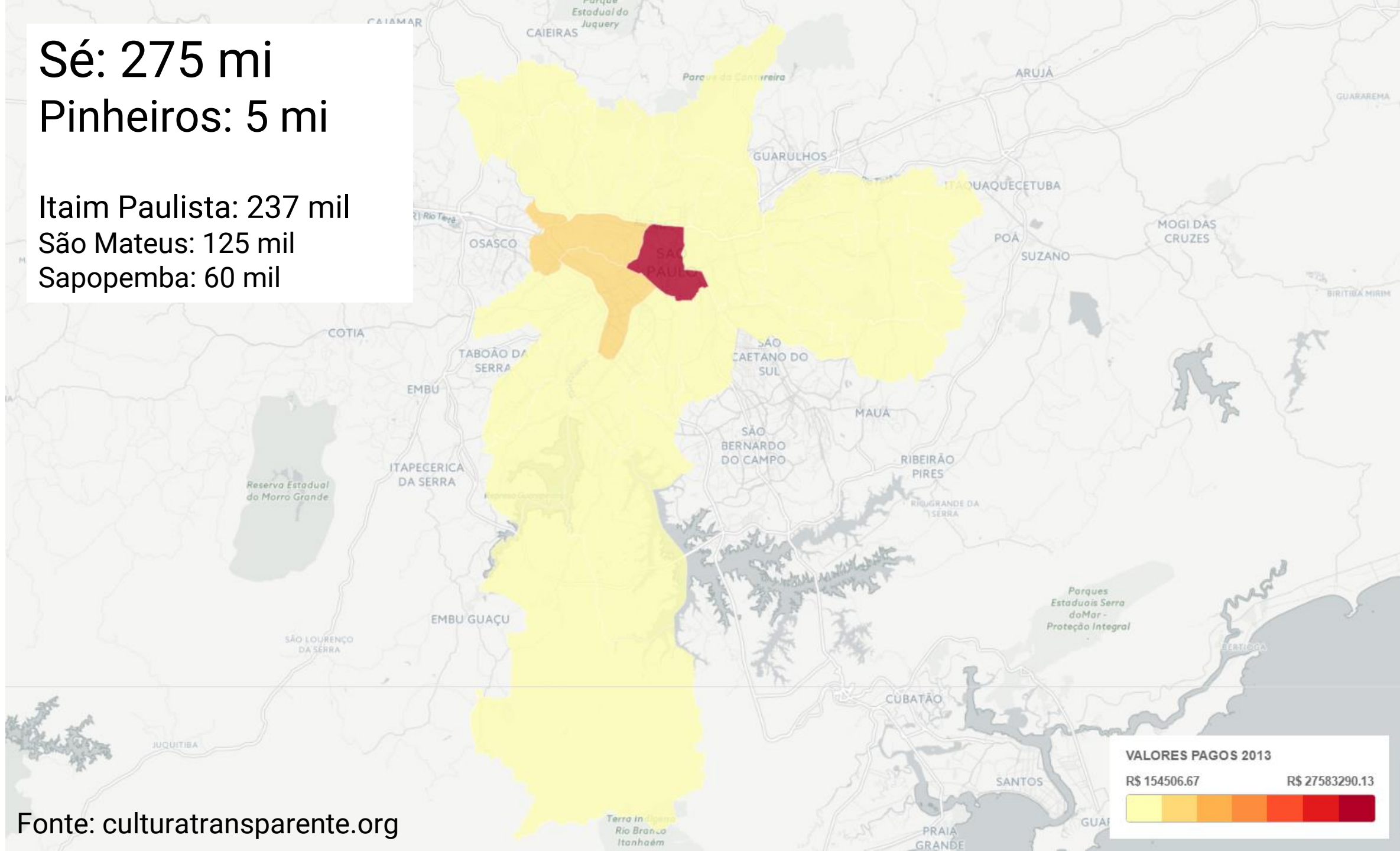


2018~



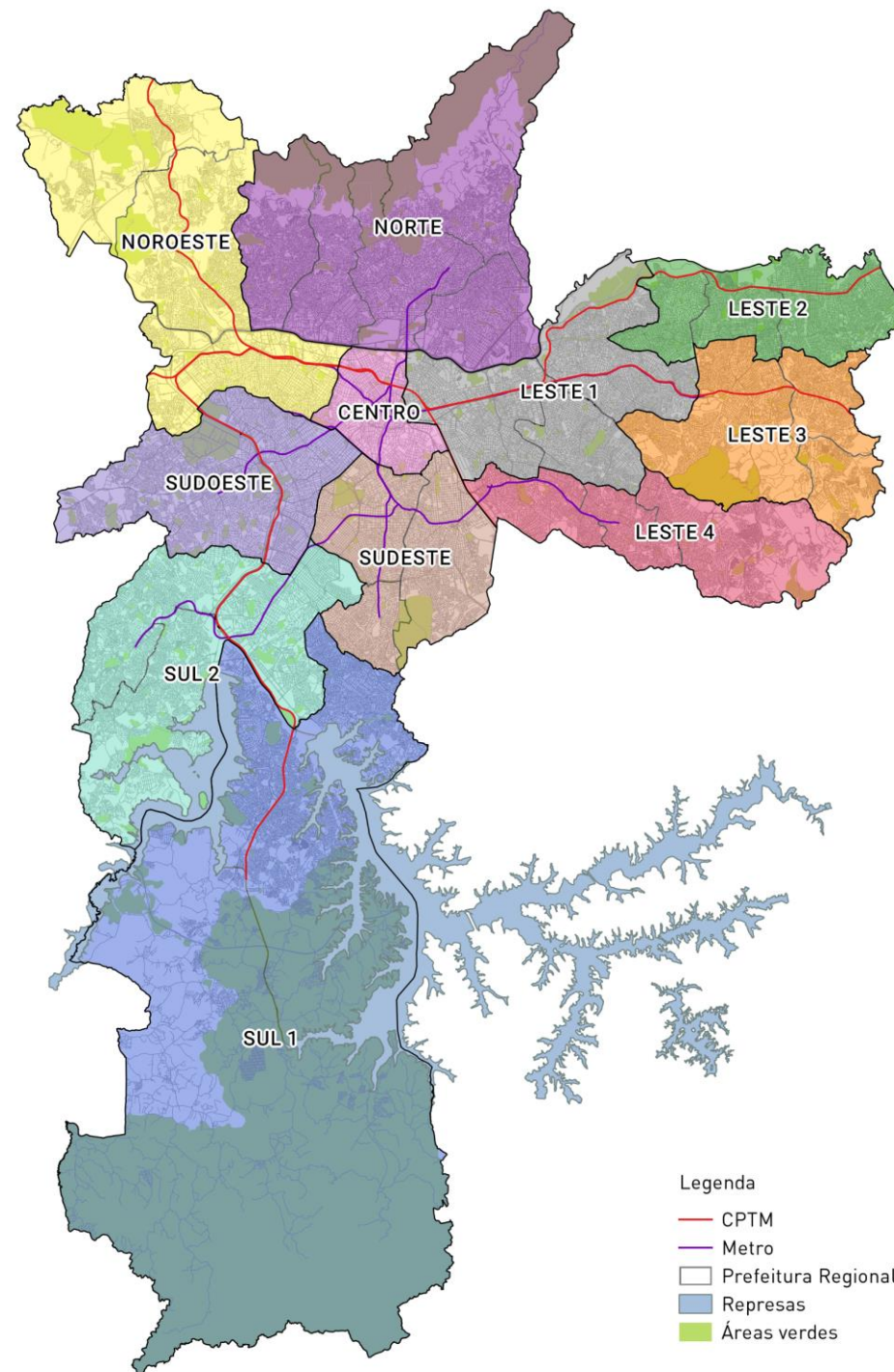
Sé: 275 mi  
Pinheiros: 5 mi

Itaim Paulista: 237 mil  
São Mateus: 125 mil  
Sapopemba: 60 mil



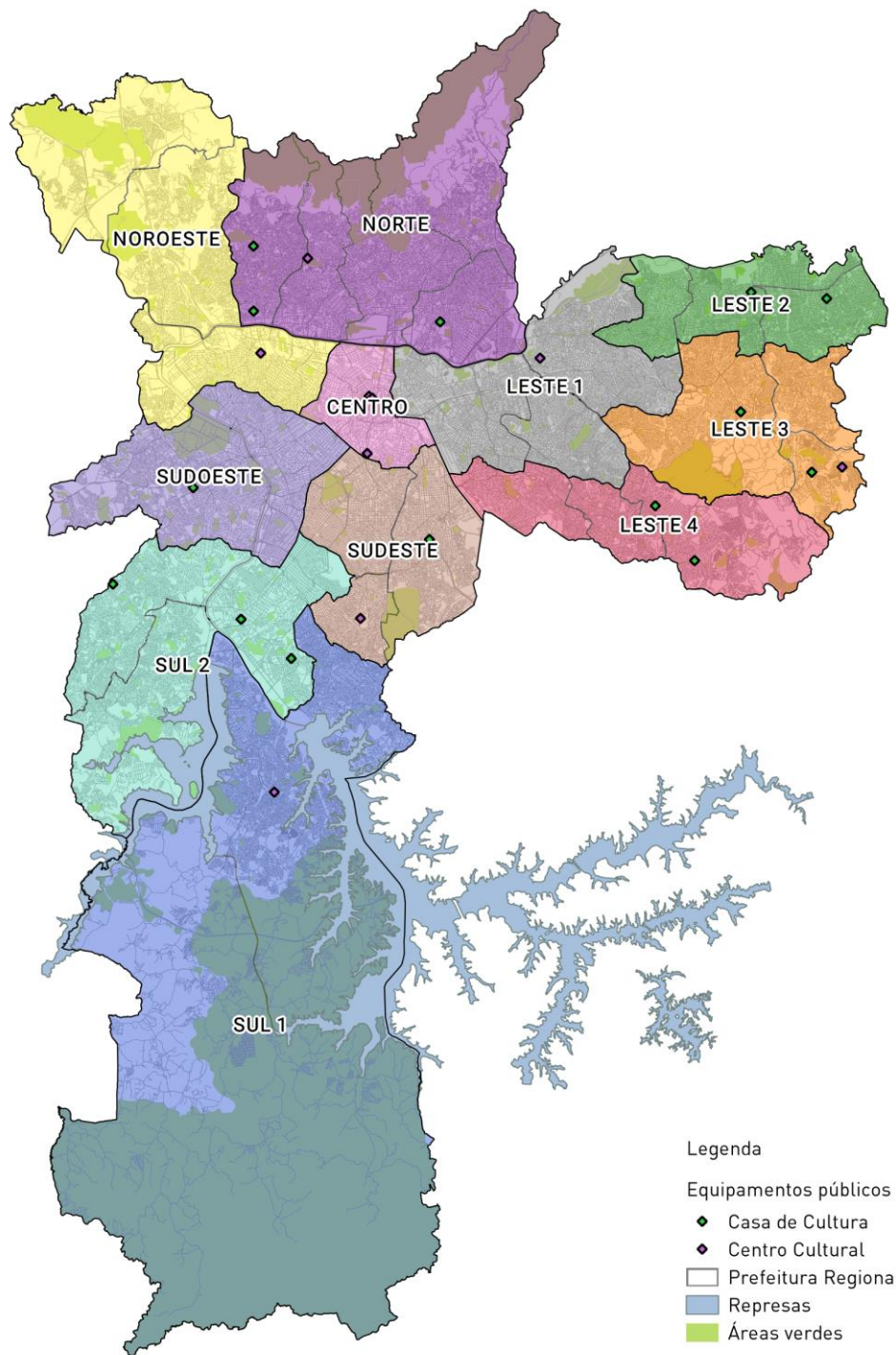
# REGIÕES DEFINIDAS NO PLANO MUNICIPAL DE CULTURA

- 11 REGIÕES
- DEFINIDAS DE ACORDO COM A MOBILIDADE URBANA



# CASAS DE CULTURA E CENTROS CULTURAIS

FONTE: SPCULTURA



# ESPAÇOS AUTÔNOMOS

FONTE: MCP

